

DNA methylation directs functional maturation of pancreatic β cells

Sangeeta Dhawan, ... , Aleksey Matveyenko, Anil Bhushan

J Clin Invest. 2015;125(7):2851-2860. <https://doi.org/10.1172/JCI79956>.

Research Article

Development

Endocrinology

Genetics

Metabolism

Pancreatic β cells secrete insulin in response to postprandial increases in glucose levels to prevent hyperglycemia and inhibit insulin secretion under fasting conditions to protect against hypoglycemia. β cells lack this functional capability at birth and acquire glucose-stimulated insulin secretion (GSIS) during neonatal life. Here, we have shown that during postnatal life, the de novo DNA methyltransferase DNMT3A initiates a metabolic program by repressing key genes, thereby enabling the coupling of insulin secretion to glucose levels. In a murine model, β cell-specific deletion of *Dnmt3a* prevented the metabolic switch, resulting in loss of GSIS. DNMT3A bound to the promoters of the genes encoding hexokinase 1 (HK1) and lactate dehydrogenase A (LDHA) — both of which regulate the metabolic switch — and knockdown of these two key DNMT3A targets restored the GSIS response in islets from animals with β cell-specific *Dnmt3a* deletion. Furthermore, DNA methylation-mediated repression of glucose-secretion decoupling genes to modulate GSIS was conserved in human β cells. Together, our results reveal a role for DNA methylation to direct the acquisition of pancreatic β cell function.

Find the latest version:

<https://jci.me/79956/pdf>



DNA methylation directs functional maturation of pancreatic β cells

Sangeeta Dhawan,¹ Shuen-Ing Tschen,¹ Chun Zeng,¹ Tingxia Guo,² Matthias Hebrok,² Aleksey Matveyenko,¹ and Anil Bhushan^{1,2}

¹Division of Endocrinology, UCLA, Los Angeles, California, USA. ²Diabetes Center, UCSF, San Francisco, California, USA.

Pancreatic β cells secrete insulin in response to postprandial increases in glucose levels to prevent hyperglycemia and inhibit insulin secretion under fasting conditions to protect against hypoglycemia. β cells lack this functional capability at birth and acquire glucose-stimulated insulin secretion (GSIS) during neonatal life. Here, we have shown that during postnatal life, the de novo DNA methyltransferase DNMT3A initiates a metabolic program by repressing key genes, thereby enabling the coupling of insulin secretion to glucose levels. In a murine model, β cell-specific deletion of *Dnmt3a* prevented the metabolic switch, resulting in loss of GSIS. DNMT3A bound to the promoters of the genes encoding hexokinase 1 (HK1) and lactate dehydrogenase A (LDHA) – both of which regulate the metabolic switch – and knockdown of these two key DNMT3A targets restored the GSIS response in islets from animals with β cell-specific *Dnmt3a* deletion. Furthermore, DNA methylation-mediated repression of glucose-secretion decoupling genes to modulate GSIS was conserved in human β cells. Together, our results reveal a role for DNA methylation to direct the acquisition of pancreatic β cell function.

Introduction

Adult pancreatic β cells are uniquely designed to couple the rate of intracellular glucose metabolism with insulin secretion in proportion to postprandial rise in blood glucose (1–8). Neonatal β cells, by contrast, secrete insulin irrespective of changes in extracellular glucose levels (9, 10). The molecular mechanisms that drive the transition of β cells to functional maturity during the postnatal period are not known. Temporal expression of specific transcription factors has been associated with this transition. In mice, transcription factor MAFB is expressed in β cells only during the neonatal period, while MAFA, a related transcription factor, is upregulated in mature β cells (11, 12). Stage-specific activity of several transcription factors, such as MAFA and NeuroD, has been implicated in directing the establishment of glucose-stimulated insulin secretion during β cell maturation (11–14). Recent work also suggests the involvement of cellular signals, such as thyroid hormone and TGF- β , in the regulation of β cell functional maturation (15, 16). Molecular profiling studies show that neonatal and adult β cells are marked by distinct molecular signatures, but how these signatures correlate with the acquisition of glucose-stimulated insulin secretion (GSIS) is unclear.

Adult β cells are also designed to repress insulin secretion under fasting conditions to protect against hypoglycemia. This coupling of metabolic flux with extracellular availability of glucose in adult β cells is facilitated by the absence of low- K_m hexokinases, so the first step of glycolysis is mediated by a high- K_m variant, glucokinase. This, together with low expression of lactate dehydrogenase, and the lactate pyruvate transporter *Slc16a1* (also known as *Mct1*) in β cells

results in the virtual absence of anaerobic glycolysis to ensure that the extent of pyruvate production and its subsequent entry into the tricarboxylic acid (TCA) cycle is directly proportional to the postprandial rise in blood glucose. These genes were first identified as a group of housekeeping genes specifically disallowed in β cells, and it was proposed that their aberrant expression would interfere with glucose sensing (17). Work using RNA expression analysis of cultured islets, compared with RNA expression data from other tissues, validated the selective repression of these genes in β cells (18). Subsequent studies comparing the mRNA profiles from cultured islets with many more tissue types using rigorous microarray screens further highlighted the β cell-specific inhibition of these genes (19). The repression of these genes is critical in the context of maintaining mature behavior of β cells, and aberration in the process could potentially result in loss of glucose homeostasis (20, 21). This is illustrated by ectopic expression of lactate dehydrogenase and the lactate pyruvate transporter *Slc16a1*, which results in impaired insulin secretion (17, 20). Mutations with β cell misexpression of the disallowed *Slc16a1* in β cells are associated with a disease called exercise-induced hyperinsulinism (EIHI), characterized by inappropriate insulin secretion and associated with hypoglycemia during anaerobic exercise (22). Together, these studies suggest that critical mechanisms must be in place to prevent the expression of these genes in β cells toward appropriate function.

Examination of epigenetic marks histone H3K27 tri-methylation (H3K27me3), and H3K9 acetylation (H3K9Ac) in islets compared with other tissues suggested that the disallowed genes are regulated epigenetically by a repressive chromatin state (19). Comprehensive genome-wide analysis of activating and repressive histone marks during β cell development further underscored the importance of epigenetic regulation in islet maturation, showing that the establishment of a differentiated expression profile also includes specific repression of genes in β cells (23, 24). It has been shown that polycomb-mediated gene repression is key for the establishment of repression of these genes during pancreas organogenesis but is

► Related Commentary: p. 2565

Conflict of interest: The authors have declared that no conflict of interest exists.

Submitted: November 11, 2014; **Accepted:** April 23, 2015.

Reference information: *J Clin Invest*. 2015;125(7):2851–2860. doi:10.1172/JCI79956.

not responsible for maintenance of their repression in the differentiated β cells (19, 23, 24). This suggests the existence of polycomb-independent mechanisms in the differentiated β cell to mediate repression of these genes.

In this study, we describe an essential role for DNA methylation in the establishment of pancreatic β cell maturation. We show that the de novo DNA methyltransferase DNMT3A directs a metabolic program by repressing key genes to enable the coupling of insulin secretion to glucose levels during β cell maturation. Loss of *Dnmt3a* in pancreatic β cells prevents this developmental metabolic reprogramming, resulting in loss of GSIS. Furthermore, we show that the DNA methylation-mediated pathway regulating GSIS is conserved in human β cells. Our results highlight an epigenetic mechanism that governs β cell maturation during development and could provide new insights into impaired β cell function in diabetes.

Results

To determine whether the levels of metabolic enzymes involved in regulation of GSIS were altered during the postnatal maturation period of β cells, we used mice in which GFP is driven by the mouse insulin promoter (MIP) to sort β cells by FACS. Comparison of the gene expression patterns of metabolic enzymes in sorted β cells from postnatal day 4 (P4) and P25 animals revealed that many genes that regulate glycolysis, the pentose phosphatase pathway, and lipid biosynthesis were dramatically downregulated in adult β cells (Supplemental Figure 1A; supplemental material available online with this article; doi:10.1172/JCI79956DS1). The changes in the levels of many of these metabolic genes could be attributed to shifts in energy metabolism, as β cells during the early postnatal period transition from high rates of replication to relative quiescence (25). To distinguish metabolic genes related to shifts in energy metabolism from genes specifically related to β cell maturation, we compared β cells to proliferating and quiescent mouse embryonic fibroblasts (MEFs) (Supplemental Figure 1B; ref. 26). We identified a set of genes that regulate intracellular glucose metabolism — namely, hexokinases 1 and 2 (*Hk1*, *Hk2*), lactate dehydrogenase *a* (*Ldha*), and aldolase B (*Aldob*) — that were relatively unaltered in proliferating and quiescent MEFs but were selectively repressed during the transition of immature β cell to a functionally mature β cell. Ectopic expression of *Hk1* and *Ldha* in β cells has been shown to affect coupling of glucose metabolism to secretion of insulin, resulting in high basal insulin secretion at low glucose levels (27–31). Prior studies also identified the absence of a few of these genes in adult β cells as disallowed genes (18). This group of genes share a common attribute of permitting activation of glycolytic flux at lower extracellular glucose thresholds, and we refer to these genes as glucose-secretion decoupling genes. Together, these results are consistent with the idea that repression of these glucose-secretion decoupling genes can modulate functional maturity of β cells and prevent inappropriate insulin release (14).

To confirm the downregulation of these glucose-secretion decoupling genes in β cells during postnatal life, we analyzed sorted β cells from multiple neonatal and adult mice and assessed expression by quantitative PCR (qPCR). The glucose-secretion decoupling genes were expressed in neonatal β cells but downregulated during the early postnatal period, which is characterized by the upregulation of markers associated with mature β cells such as

MafA (32, 33) and urocortin3 (*Ucn3*) (9). The levels of β cell-specific transcription factors such as PDX1 were unaltered during this period (Figure 1A; ref. 34). IHC of GLUT2 (35) did not display any changes in the postnatal period, indicating that acquisition of GSIS did not involve the cell-surface glucose transporter (Supplemental Figure 1C). To address the mechanism by which the glucose-secretion decoupling genes were downregulated, we assessed whether DNA methylation was involved in the repression of glucose metabolism genes. We carried out bisulfite sequencing analysis of the CpG-rich regions of the glucose-secretion decoupling genes in sorted β cells from neonatal and adult mice. We found that the CpG-rich regions in the *Hk1* (–413 to –161 bp) and *Ldha* (–417 to –179 bp; +1119 to +1419 bp) loci were predominantly unmethylated in β cells sorted from neonatal mice but mostly methylated in β cells sorted from adult mice (Figure 1B and Supplemental Figure 1D). Another key glycolytic gene that is involved in regulating the rate of glucose metabolism *Aldob* also showed increased methylation in adult β cells (Supplemental Figure 1D).

To investigate which enzymes mediate de novo methylation of the regulatory regions of glucose-secretion decoupling genes in β cells, we examined the expression of de novo DNA methyltransferases DNMT3A and DNMT3B, in the postnatal period, using IHC and qPCR analyses. DNMT3b was not detectable in the endocrine cells in these experiments (data not shown). Analysis of RNA expression showed a decline in the levels of de novo DNA methyltransferase DNMT3A during the transition from early neonatal life to after-weaning period (Figure 1A). IHC analysis on pancreatic sections from early postnatal period revealed strong nuclear staining for DNMT3A in the islets (Figure 2A). Costaining with insulin showed that DNMT3A was expressed exclusively in β cells, and the number of β cells expressing DNMT3A declined with increased postnatal age. In 6-week-old pancreas, very few β cells showed weak staining for DNMT3A (Figure 2A). Expression of another de novo DNA methyltransferase, DNMT3B was not detected in the β cells during the postnatal period (data not shown). To address whether DNMT3A directly regulated glucose-secretion decoupling genes, we examined the binding of DNMT3A to the CpG-rich regulatory regions *Hk1* and *Ldha* loci by ChIP assays. ChIP assay on sorted β cells from P4, P14, and P25 animals revealed that *Dnmt3a* was enriched at the CpG-rich differentially methylated regions *Hk1* and *Ldha* loci in β cells from P14 mice. The binding of DNMT3A to *Hk1* and *Ldha* loci decreased in β cells sorted from P25 mice (Figure 2B). Together, the expression pattern and binding of DNMT3A to *Hk1* and *Ldha* loci is consistent with DNMT3A mediating de novo DNA methylation of glucose metabolic genes in β cells during the neonatal period.

To address the requirement for DNMT3A in de novo DNA methylation of glucose-secretion decoupling genes during β cell functional maturation, we crossed mice transgenic for Cre recombinase under the control of rat insulin promoter (*RIP-Cre*) with *Dnmt3a*^{*fl/fl*} mice to selectively inactivate *Dnmt3a* in β cells. In addition, the *Dnmt3a*^{*fl/fl*} mice were maintained in the *R26R-eYFP* reporter background to allow isolation of heritably labeled cells that transcribed the insulin gene. Immunohistology confirmed Cre recombinase activity specifically in β cells in pancreatic sections from *Dnmt3a*^{*fl/fl*} *R26R-eYFP* *RIP-Cre* mice (Supplemental Figure 2A). The recombined β cells were marked by the absence

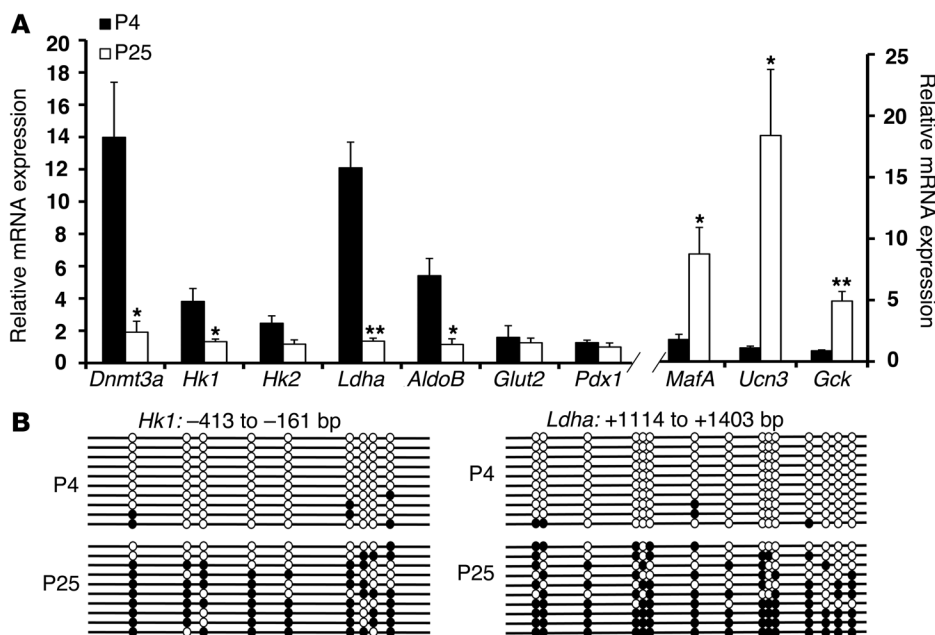


Figure 1. DNA methylation directs metabolic programming during β cell maturation. (A) Relative mRNA expression of indicated genes in sorted β cells from P4 and P25 MIP-GFP mice. *Cyclophilin A* was used as a housekeeping gene. $n = 3$ independent experiments. Error bars represent SEM. * $P < 0.05$, ** $P < 0.01$, Student's t test. (B) Bisulfite sequencing analysis for the *Hk1* and *Ldha* loci at indicated regions comparing sorted β cells from P4 and P25 MIP-GFP mice (representative clones from $n = 3$ mice). Each horizontal line with dots is an independent clone, and 10 clones are shown here. These regions are almost fully DNA methylated (filled circles) in β cells from P25 mice, but largely hypomethylated (open circles) in β cells from P4 mice.

of detectable DNMT3A protein, while abundant DNMT3A protein was observed within the islets of pancreatic tissue from control littermates (Supplemental Figure 2B). Pancreatic tissue isolated from 6-week-old *Dnmt3a*^{fl/fl} R26R-*eYFP* RIP-Cre (herein referred to as *3aRCY*-KO) and *Dnmt3a*^{fl/+} R26R-*eYFP* RIP-Cre (herein referred to as *3aRCY*-Het) littermate mice were immunostained for insulin and glucagon, endocrine hormones that mark β and α cells, respectively. No overt differences were apparent, and islets from both *3aRCY*-KO and *3aRCY*-Het littermate mice displayed a characteristic distribution of endocrine cells, with β cells forming the core and α cells at the periphery forming the mantle (Figure 3A). Staining for transcription factors NKX6.1 (Figure 3A) and PDX1 (not shown), as well as GLUT2 on the cell surface (Supplemental Figure 2C), showed no difference between *3aRCY*-KO and *3aRCY*-Het littermate pancreatic sections. No differences were found in the proliferation of β cells between *3aRCY*-KO and *3aRCY*-Het littermates, as examined by immunostaining for Ki-67 (Supplemental Figure 2D). Transcriptional profile of sorted β cells from 6-week-old *3aRCY*-KO and *3aRCY*-Het littermate mice revealed that the glucose-secretion decoupling genes were de-repressed in the absence of *Dnmt3a* (Supplemental Figure 2E). We confirmed using qPCR that these glucose-secretion decoupling genes were upregulated in sorted β cells from *3aRCY*-KO mice, while transcription factors and hormones characteristic of β cells, by contrast, were not significantly altered (Figure 3B), compared with β cells from *3aRCY*-Het. No significant changes were observed in the RNA levels of β cell transcription factors *Pdx1*, *MafA*, and *Nkx6.1*.

To investigate whether β cells deficient in *Dnmt3a* displayed changes in DNA methylation at CpG-rich regions within the loci of the glucose-secretion decoupling genes, we used the R26R-*eYFP* reporter to isolate heritably labeled cells that transcribed the insulin gene in *3aRCY*-KO and *3aRCY*-Het littermates. Bisulfite sequencing analysis on YFP-positive cells isolated from *3aRCY*-Het 6-week-old mice showed hypermethylation in the differentially

methylated regions of *Hk1*, *Ldha*, and *AldoB* loci similar to the pattern observed in adult WT β cells. In contrast, YFP-positive cells isolated from conditional *Dnmt3a* mutant littermates revealed that differentially methylated regions of these loci were predominantly hypomethylated and characteristic of WT neonatal β cells (Figure 3C, Supplemental Figure 2F, and Figure 1B). To rule out any potential artifacts arising from the expression of Cre recombinase alone, the changes in RNA expression and DNA methylation profiles in the β cells from *3aRCY*-KO were further validated and confirmed by comparing them with β cells from RCY (R26R-*eYFP* RIP-Cre) animals (Supplemental Figure 2, G and H).

To assess β cell function, we measured plasma insulin levels at fasting and after an intra-peritoneal glucose challenge. *3aRCY*-Het mice showed a 5-fold increase in plasma insulin levels 30 minutes after glucose stimulation. In contrast, *3aRCY*-KO mice displayed high plasma insulin levels at fasting and no significant increase after glucose stimulation (Figure 4A). We next measured dynamic insulin secretion in isolated islets from *3aRCY*-KO and *3aRCY*-Het littermate mice. *3aRCY*-Het islets treated with single-step increase in glucose concentration from 4–16 mM produced a robust insulin secretory response to glucose. By contrast, *3aRCY*-KO islets displayed increased basal insulin secretion at low glucose concentration and did not respond to stepwise increases in glucose concentration (Figure 4, B and C). Islets from both *3aRCY*-KO and *3aRCY*-Het mice did not display any difference in insulin secretion in response to depolarizing secretagogue arginine, suggesting that the defect was likely to precede membrane depolarization (Figure 4D). Furthermore, using drugs that act on KATP channels, we showed that insulin secretion in islets isolated from both *3aRCY*-KO and *3aRCY*-Het mice was abolished by diazoxide and reversibly restored by tolbutamide (29), suggesting that the defects due to loss of *Dnmt3a* are upstream of the KATP channel (Figure 4E). This, together with our observations on changes in the metabolic program, support the idea that these defects in β cell function are likely due to changes in glucose metabolism.

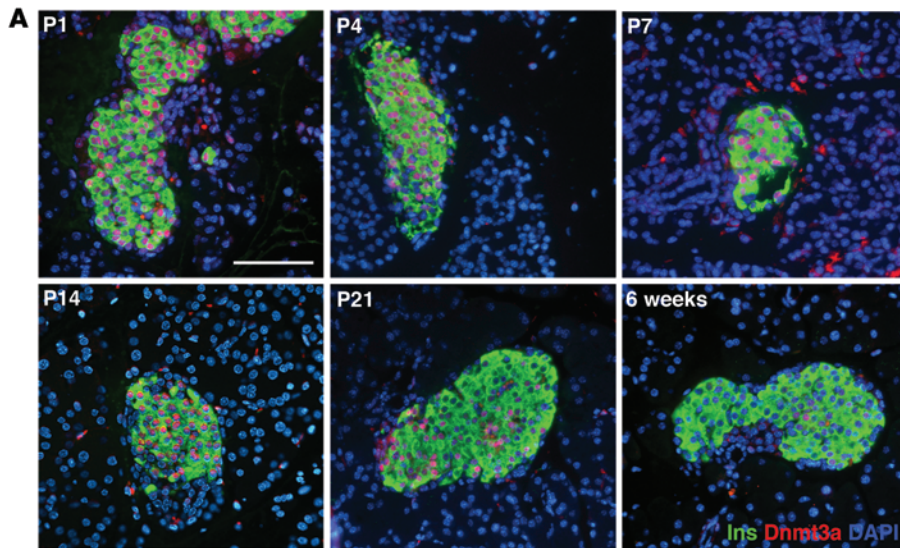
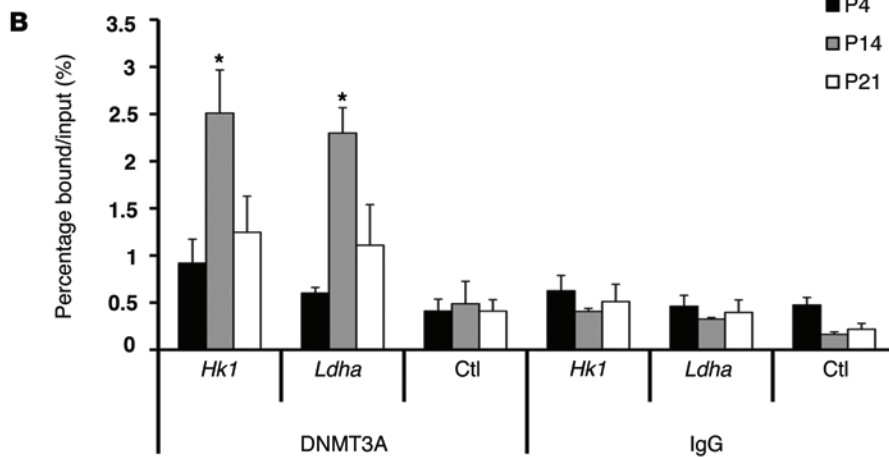


Figure 2. De novo DNA methyltransferase DNMT3A targets specific metabolic gene loci during β cell maturation. (A) Expression profile of DNMT3A in representative pancreatic sections from WT mice at indicated ages (P1 to 6 weeks) using immunostaining for DNMT3A (red) and insulin (Ins; green). DAPI (blue) counter-stains the nuclei. (Representative from 3 independent experiments). Scale bar: 100 μ m. (B) ChIP analysis showing the binding of DNMT3A to the *Ldha* (+1114 to +1220 bp) and *Hk1* (-324 to -215 bp) loci, along with a negative-control primer pair (ctl) in the *Arx* locus (+1348 to +1470 bp) in sorted β cells from MIP-GFP mice at indicated ages. ChIP with IgG is shown as a negative control. $n = 3$ independent experiments. The error bars represent SEM. * $P < 0.05$, Student's t test.



The increased levels of *Ldha* in the *3aRCY*-KO islets translated into increased lactate release from these islets, in comparison to islets from *3aRCY*-Het control mice (Supplemental Figure 3A). As *Hk1* and *Ldha*, 2 key glucose metabolism genes, were upregulated due to the loss of DNMT3A, we asked whether inhibition of *Hk1* and *Ldha* in islets that lacked *Dnmt3a* could restore GSIS. We used specific siRNAs to knock down both *Hk1* and *Ldha* in islets from *3aRCY*-KO mice before assessing GSIS. Treatment of islets from *3aRCY*-KO mice with a combination of *Hk1* and *Ldha* siRNA specifically and efficiently reduced the levels of these transcripts, without affecting the levels of other glycolytic genes tested (Supplemental Figure 3B). Knockdown using scrambled siRNA showed no change in insulin secretion in response to stepwise increases in glucose concentration. However, knockdown of *Hk1* and *Ldha* resulted in reduction in basal insulin secretion at low glucose concentration and increased insulin secretory response at high glucose concentration (Figure 4F).

To address whether DNMT3A was required during embryogenesis, we crossed mice transgenic for a tamoxifen-responsive Cre recombinase-estrogen receptor fusion under the control of a *Pdx1* promoter (*Pdx1-Cre^{ERT}*) with *Dnmt3a^{fl/fl}* mice to inactivate *Dnmt3a* in β cells during neonatal life and drive a *R26R-eYFP*

reporter (*Pdx1-Cre^{ERT} Dnmt3a^{fl/fl} R26R-eYFP*, herein referred to as *3aPCERY*-KO). Real-time PCR for *Dnmt3a* on islets isolated from *3aPCERY*-KO mice showed efficient deletion of *Dnmt3a* levels, compared with islets from *Dnmt3a^{fl/+} R26R-eYFP Pdx1-Cre^{ERT}* (herein referred to as *3aPCERY*-Het) (Supplemental Figure 3C). A comparison of YFP-positive cells isolated from *3aPCERY*-KO animals with those from *3aPCERY*-Het showed increased expression of *Hk1*, *Ldha*, and *AldoB* in a manner similar to the *3aRCY* model, while no significant changes were observed in the transcript levels of *Nkx6.1* and *Pdx1* (Supplemental Figure 3, D and E). These observations confirmed a stage-specific requirement for DNMT3A

in directing methylation and repression of these genes during β cell maturation. In vivo insulin secretion experiments revealed no difference from the *3aRCY* model (Supplemental Figure 3F), suggesting that the acute requirement of *Dnmt3a* during the maturation period and the changes in β cell function upon loss of *Dnmt3a* are not a consequence of leakiness from the *RIP-Cre* driver (36).

We next investigated the regulatory regions of glucose-secretion decoupling genes in human islets and insulin-expressing cells derived from pluripotent cells (37). As most pluripotent cell differentiation protocols generate insulin-positive cells that resemble immature β cells (9, 37), we used these cells as a proxy for fetal human β cells. In contrast to human islets, which showed GSIS response to stepwise increase in glucose concentration, the response of insulin-expressing cells from pluripotent cells to increases in glucose concentration was reminiscent of neonatal and *3aRCY*-KO islets (Figure 5A). Analysis of the *DNMT3A* transcript levels in pluripotent-derived insulin-positive cells showed higher *DNMT3A* levels in these cells, compared with mature human islets, reminiscent of the *DNMT3A* expression profile in neonatal β cells (Supplemental Figure 4A). Transcriptional profile of pluripotent-derived insulin-expressing cells showed increased levels of *HK1*, *HK2*, *LDHA*, and *ALDOB*, compared with levels

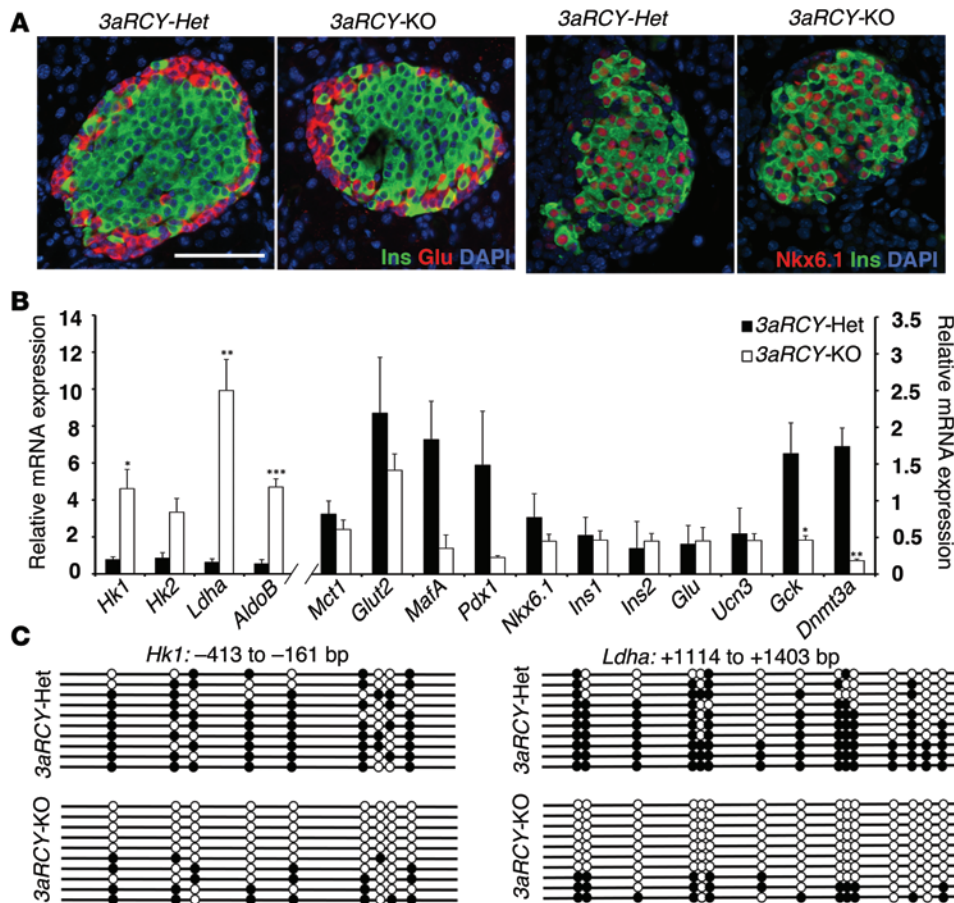


Figure 3. De novo DNA methyltransferase DNMT3A is required for metabolic programming during β cell maturation. (A) Representative pancreatic sections from 2-week-old *3aRCY-KO* and littermate-control *3aRCY-Het* animals, immunostained for insulin (Ins; green) and glucagon (Glu; red), with DAPI (blue) (left 2 panels), or NKX6.1 (red), insulin (Ins; green) and DAPI (blue) (right 2 panels). Scale bar: 100 μ m. (B) Relative mRNA expression of indicated genes in sorted β cells from 6-week-old *3aRCY-KO* and control *3aRCY-Het* littermates. *Cyclophilin A* was used as a housekeeping gene. (C) Bisulfite sequencing analysis for the *Hk1* and *Ldha* loci at indicated regions comparing sorted β cells from 6-week-old *3aRCY-KO* and control *3aRCY-Het* littermates (representative clones from $n = 3$ mice). Each horizontal line with dots is an independent clone, and 10 clones are shown here. These regions are almost fully DNA-methylated (filled circles) in β cells from *3aRCY-Het* mice, but largely hypomethylated (open circles) in β cells from *3aRCY-KO* mice. For all experiments, $n = 3$ independent experiments. The error bars represent SEM. * $P < 0.05$, ** $P < 0.01$, *** $P < 0.005$, Student's *t* test.

seen in human islets (Figure 5B and Supplemental Figure 4B). Bisulfite sequencing analysis revealed that CpG-rich regions with the *HK1*, *HK2*, *LDHA*, and *ALDOB* loci were hypomethylated in pluripotent-derived insulin-expressing cells. By contrast, these CpG-rich regions were hypermethylated in human islets (Figure 5C and Supplemental Figure 4C).

The transcriptional profile of EndoC- β H1 human pancreatic β cell line derived from fetal pancreas (38) also showed high levels of *DNMT3A*, *HK1*, *HK2*, and *LDHA*, compared with human islets levels (Figure 5D and Supplemental Figure 5A). Bisulfite sequencing analysis in EndoC- β H1 cells showed that the CpG-rich regions with the *HK1* and *LDHA* loci showed reduced methylation, compared with human islets (Figure 5C). We next used specific siRNAs to knock down the expression of *HK1* and *LDHA* in the EndoC- β H1 cells (Supplemental Figure 5B). GSIS measurements showed that the loss of *HK1* and *LDHA* resulted in improved insulin secretion in response to stepwise increases in glucose concentration, compared with cells transfected with a scrambled siRNA (Figure 5E). These results indicate that the repression of glucose-secretion decoupling genes to modulate functional maturity is conserved in human β cells. In addition, the expression and DNA methylation patterns of glucose-secretion decoupling genes could serve as molecular markers for deriving functional human β cells for diabetes therapy. Overall, our results indicate that DNA methylation-mediated repression of glucose-secretion coupling genes occurs during postnatal maturation and is critical for regulating GSIS in rodent and human β cells.

Discussion

Neonatal and adult β cells differ in the ability to properly regulate insulin in response to glucose (39–41). Our study here shows that the functional maturation of β cells requires remodeling of the metabolic infrastructure to support the acquisition of GSIS within a narrow range of glucose concentration. This transition from neonatal to adult β cells is accompanied by a shift in energy metabolism from a predominantly glycolytic to oxidative phosphorylation. While many other cell types undergo a similar metabolic shift during cellular differentiation and phenotypic maturation (42–45), β cells are unique in the absence of a specific set of metabolic genes that we refer to as glucose-secretion decoupling genes, such as low K_m hexokinases, *Ldha*, and the lactate pyruvate transporter *Slc16a1* (17, 19, 21). β cell-specific repression of these key metabolic genes is essential toward maintenance of the mature, functional phenotype. Ectopic expression of *Hk1* and *Ldha* in β cells has been shown to disrupt the coupling of glucose metabolism to secretion of insulin and impaired GSIS (27, 28, 30, 31). The physiological importance of such mechanisms is further highlighted by disease pathologies resulting from the aberrant expression of these genes in β cells. Gain-of-function mutations in the promoter region of *Slc16a1* result in EIHI, which is characterized by inappropriate insulin secretion and consequent hypoglycemia during anaerobic exercise (22), with similar observations made in a mouse model with ectopic expression of *Slc16a1* (46). Similarly, aberrant expression of low K_m hexokinase variant *HK1* in β cells in humans has been associated with a form of congenital hyperinsulinism

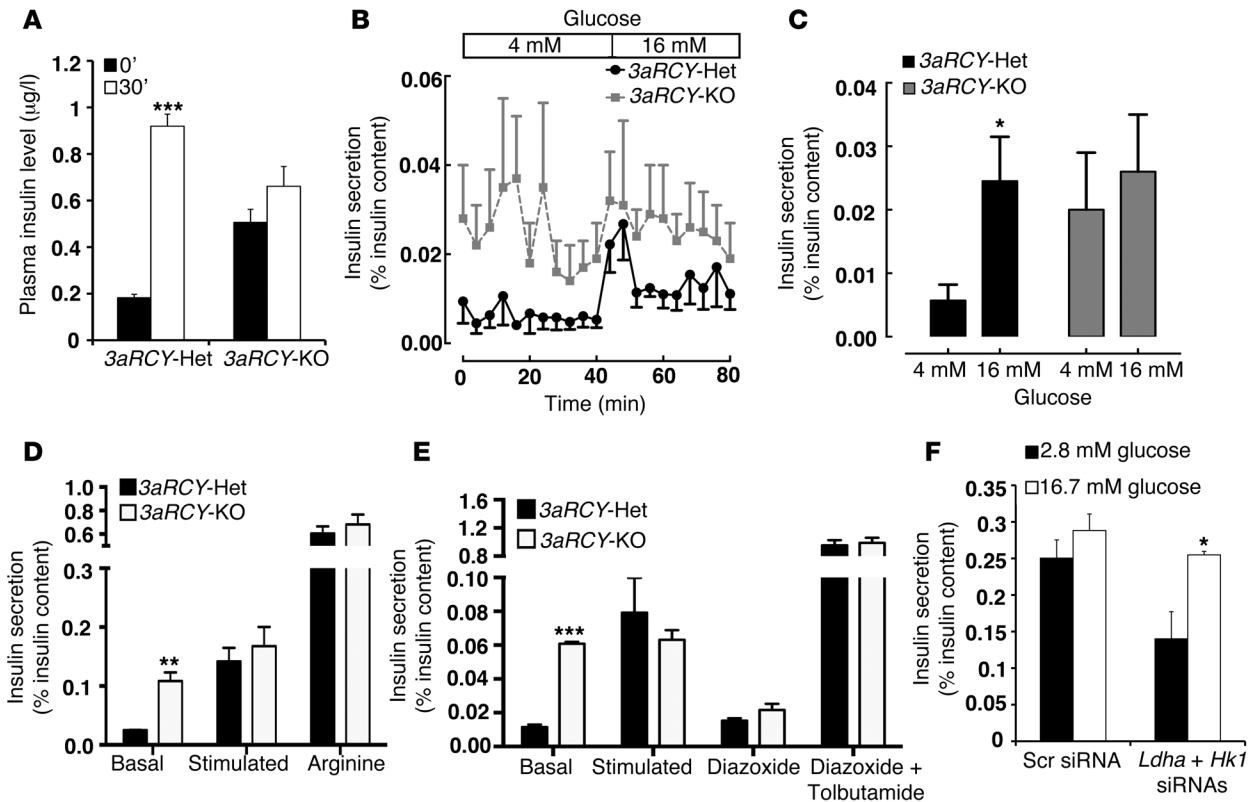


Figure 4. β Cells lacking *Dnmt3a* are functionally immature. (A) Plasma insulin levels in 6-week-old *3aRCY-KO* mice and littermate-control *3aRCY-Het* mice (fasted 6 hours) at 0 and 30 minutes after i.p. injection of 2 g/kg glucose ($n = 3$ for each genotype). (B) Insulin secretion (percentage of insulin content) in a dynamic islet perfusion assay comparing islets from 6-week-old *3aRCY-KO* or control *3aRCY-Het* littermates at 4 mM and 16 mM glucose. (C) Average insulin secretion (percentage of content) in the dynamic islet perfusion GSIS at 4 mM and 16 mM glucose, comparing *3aRCY-KO* islets with control *3aRCY-Het* islets from $n = 3$ mice aged 6 weeks. (D) Static incubation GSIS assay, comparing insulin secretion (percentage of insulin content) in islets from *3aRCY-KO* mice with control *3aRCY-Het* islets ($n = 3$ mice), at 2.8 mM glucose, 16.7 mM glucose, and 20 mM arginine. (E) Static incubation GSIS assay, comparing insulin secretion (percentage of insulin content) in islets from 6-week-old *3aRCY-KO* mice with control *3aRCY-Het* islets, at 2.8 mM glucose, 16.7 mM glucose, 100 μ M diazoxide, and a 100 mM each of diazoxide and tolbutamide ($n = 3$ mice). (F) Static incubation GSIS assay, comparing insulin secretion (percentage of insulin content) in islets from 6-week-old *3aRCY-KO* mice, treated either with a combination of siRNAs targeting *Ldha* and *Hk1*, or scrambled (Scr) siRNA, at 2.8 mM glucose and 16.7 mM glucose ($n = 3$ mice, islets from each mice divided into the 2 experimental groups). Error bars indicate \pm SEM; * $P < 0.05$, ** $P < 0.01$, *** $P < 0.005$, Student's t test.

(CHI) (29). Thus, understanding the mechanisms that result in the repression of glucose-secretion decoupling genes to regulate β cell function is crucial.

There is intense interest in the generation of functional β cells from pluripotent cells for use in replacement strategies in diabetic patients. Recent work has highlighted the development of protocols to generate insulin-expressing cells derived from human pluripotent cells that resemble human primary β cells in several ways, and while these cells display glucose sensing, they are still not fully equivalent to mature primary human β cells (47, 48). The expression levels and DNA methylation patterns of glucose-secretion decoupling genes could be useful as a molecular benchmark in facilitating the generation of pluripotent-derived cells that closely resemble human primary β cells for replacement strategies in diabetic patients.

Our previous work has shown that DNA methylation is an important regulatory mechanism in pancreatic organogenesis during embryonic development, as well as in the specification and maintenance of β cell fate (49–51). In this manuscript, we show that de novo DNA methylation directs metabolic reprogramming

of pancreatic β cells toward their functional maturation, and pancreatic β cells lacking DNA methyltransferase *Dnmt3a* metabolically and physiologically resemble functionally immature neonatal β cells. Compared with WT adult β cells, the *Dnmt3a* KO β cells display higher lactate production and basal insulin secretion, similar to neonatal immature β cells. This suggests that de novo DNA methylation plays a key role in pancreatic β cell maturation. Several previous studies have indicated the involvement of H3K27me3 in the repression of metabolic genes, such as *Ldha* and *Slc16a1* in mature β cells, in a polycomb protein-directed mechanism (19, 23, 24). There is evidence in literature indicating that H3K27me3 may be required for proper placement of DNA methylation marks (52). It is likely that epigenetic repression of these genes is initiated via histone methylation in early development, during β cell formation, and this histone methylation coordinates with DNA methylation during β cell maturation to establish the mature β cell metabolic program. Interestingly, there is no statistically significant difference in the levels of *Slc16a1*, *Mafa*, and *Pdx1* in the *Dnmt3a* KO β cells compared with control adult β cells, further suggesting the involvement of other regulatory mechanisms. The levels of glu-

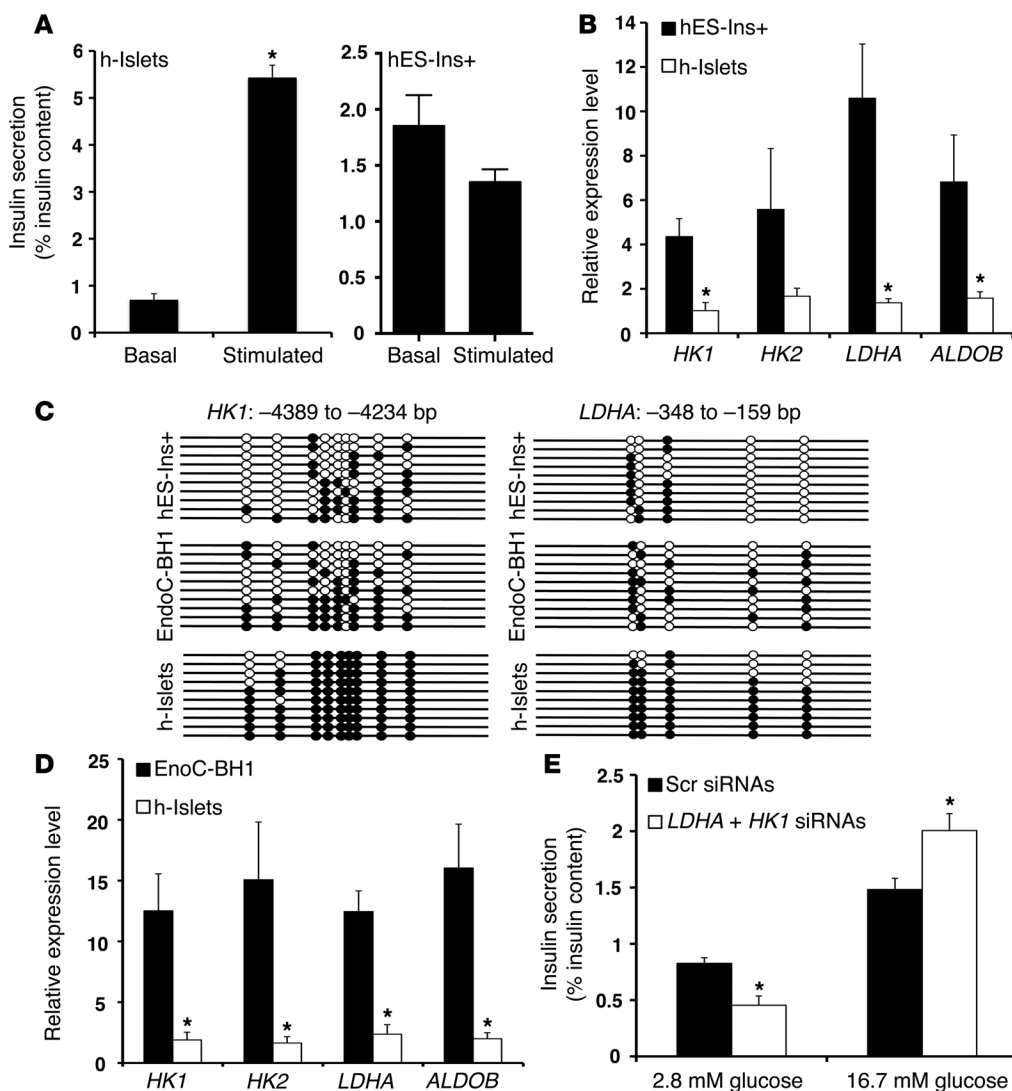


Figure 5. The metabolic programming directed by DNA methylation to regulate GSIS is conserved in human β cells. (A) Static incubation GSIS assay, showing insulin secretion (percentage of insulin content) in differentiated insulin-positive (Ins+) human ES cells (hES-Ins+ cells; left panel), and human islets (h-islets; right panel) at 2.8 mM glucose and 16.7 mM glucose. (B) Relative mRNA expression of indicated genes in sorted GFP+ hES-Ins+ cells, compared with human islets from cadaveric donors (average donor age 43 years; $n = 3$). *CYCLOPHILIN A* was used as a housekeeping gene. The error bars represent SEM. * $P < 0.05$. (C) Bisulfite sequencing analysis for the *HK1* and *LDHA* loci at indicated regions comparing sorted GFP+ hES-Ins+ cells, and EndoC-BH1 human β cell line, compared with human islets from cadaveric donors (representative clones from $n = 3$ samples per group). Each horizontal line with dots is an independent clone. These regions are almost fully DNA methylated (filled circles) in human islets but largely hypomethylated (open circles) in hES-Ins+ cells and the EndoC-BH1 human β cell line. (D) Relative mRNA expression of indicated genes in EndoC-BH1 human β cell line, compared with human islets from cadaveric donors (average donor age 43 years). *CYCLOPHILIN A* was used as a housekeeping gene. $n = 3$ independent experiments. The error bars represent SEM. * $P < 0.05$. (E) Static incubation GSIS assay, showing insulin secretion (percentage of insulin content) in comparing EndoC-BH1 cells treated with either a combination of siRNAs targeting *HK1* and *LDHA*, or a scrambled (Scr) siRNA, at 2.8 mM glucose and 16.7 mM glucose. ($n = 3$). Error bars indicate \pm SEM, * $P < 0.05$, Student's t test.

cokinase are unaffected in *Dnmt3a* KO β cells, also suggesting that transcriptional activation, in addition to DNA methylation-mediated repression of glucose-secretion decoupling genes, is needed for the establishment of a functional β cell phenotype. Together, these observations further underscore the importance of multiple regulatory layers to maintain a mature β cell phenotype.

Type 2 diabetes is characterized by impaired insulin secretion and loss of β cell identity (reviewed in ref. 53). Multiple stud-

ies have highlighted changes in DNA methylation at loci associated with β cell identity and insulin secretion in islets from subjects with type 2 diabetes (54–56). Altered metabolic program due to defects in DNA methylation have also been implicated in impaired insulin secretion in type 2 diabetes (57). This work, coupled with our previous work on the role of DNA methylation in the maintenance of β cell fate (49), could provide crucial insights into the loss of β cell fate and function in type 2 diabetes (34, 58).

Methods

Animals, genotyping, and cell lines. We used Cre/loxP system to conditionally delete *Dnmt3a* in pancreatic β cells. The following mice have been described previously: *Dnmt3a*^{fl/fl} mice with loxP sites at exon 19 of the *Dnmt3a* gene, *RIP-Cre* mice expressing Cre recombinase from rat insulin promoter, and *Pdx1-Cre*^{ERT} mice expressing Cre recombinase from *Pdx1* promoter upon tamoxifen treatment (59, 60). The *RIP-Cre* and *Pdx1-Cre*^{ERT} mice were bred into the *Rosa26R-YFP* or *Rosa26R-Tomato-EGFP* (denoted *Tom*, marked by membrane localized EGFP upon recombination) background to indelibly mark all cells that were derived from insulin-expressing cells (The Jackson Laboratory) (61, 62). The animals were maintained by mating WT males and females on a C57BL/6J background. Mice were fed ad libitum and kept under a 12-hour light/12-hour

dark cycle. DNA extracted from the tails was used for PCR-based genotyping, as previously described, for individual lines using standard methods. Mouse MEFs were generated as described previously (63) and maintained on dishes coated with 0.2% porcine gelatin, in DMEM-based medium containing 10% FBS at 37°C in 5% CO₂ environment. EndoC-BH1 cell line was provided by Philippe Ravassard (ICM, Biotechnology & biotherapy group, Hôpital Pitié Salpêtrière, Paris, France) and cultured as described (38).

Tamoxifen-dependent induction of recombination in Pdx-Cre^{ERT} line. For induction of recombination during neonatal life, nursing mothers were injected i.p. with 5 mg tamoxifen (Sigma-Aldrich) a total of 3 times, once every 48 hours, starting 1 day after giving birth. Pups were weaned normally at 21 days, and the pancreatic tissue from these weanlings was harvested at 6 weeks of age.

Human embryonic stem cell culture and differentiation. *Mel1^{ins/GFP}* human embryonic stem cells were maintained on nonproliferative MEFs in standard DMEM/F12 medium supplemented with 10 ng/ml FGF2. Cells were then seeded at 150,000–175,000 cell/cm² on matrigel and started differentiation 48 hours after seeding. Day 1–5 differentiation was carried out with RPMI 1640 (Corning), 0.2% FBS (HyClone), 1× GlutaMAX-1 (Invitrogen) plus Activin A (100 ng/ml, R&D Systems), Wnt3a (50 ng/ml, R&D Systems), and insulin-transferrin-selenium (ITS, 1:5,000, Invitrogen) for day 1; Activin A (100 ng/ml) and ITS (1:5000) for day 2; KGF (25 ng/ml, R&D Systems), TGF-β_{IV} (2.5 μM, EMD Millipore), and ITS (1:1,000) for day 3; KGF (25 ng/ml) and ITS (1:1,000) for days 4–5. Day 6–20 differentiation was carried out with DMEM/HIGH Glucose (HyClone) supplemented with 0.5× B-27 supplement (Invitrogen) plus KAAD-cyclopamine (0.25 μM, Toronto Research Chemicals Inc.), Noggin (50 ng/ml, R&D Systems), and TTNPB (3 nM, Sigma-Aldrich) for days 6–8; KGF (50 ng/ml), EGF (50 ng/ml, R&D Systems), and Noggin (50 ng/ml) for days 9–11; and ALK5 inhibitor II (1 μM, Axxora), dorsomorphin (1 μM, EMD Millipore), TPB ([2S,5S]-[E,E]-8-[5-(4-[trifluoromethyl]phenyl)-2,4-pentadienoylamino]benzotactam) (50 nM, EMD Millipore), and Noggin (50 ng/ml) for days 12–20.

Mouse islet isolation, culture and transfection, cell sorting, and human islet culture. Islets were isolated using the Liberase/DNase enzyme mix (Roche Diagnostics) as described (49). In brief, the pancreas was inflated with the enzyme mix through the common bile duct and digested at 37°C. Islets were enriched by gradient and were hand picked. One hundred to 200 islets were cultured in easy-grip tissue culture dishes (35 mm × 10 mm, BD Falcon) in DMEM (Corning) supplemented with 10% FBS. The knockdown of *Hk1* and *Ldha* in isolated mouse islets was performed by transfecting isolated mouse islets with a specific targeting siRNA. The siRNA targeting *Hk1* and *Ldha* (siGenome SMARTpool) and a control scrambled siRNA (targeting sequence: 5'-CTGACGCGGAATACTTCGA-3') were purchased from Dharmacon. Briefly, isolated islets were cultured for 24 hours prior to transfection, and then transfected using Lipofectamine-2000 (Invitrogen), according to the manufacturer's instructions. The islets were harvested 48 hours after transfection and processed for insulin secretion studies, as described below. For purification of β cells, islets from neonatal (P4) or post-weaning (P25) MIP-GFP transgenic mice were digested into single cells and sorted for GFP by FACS to an average percentage purity of 85%–95%. Cells from WT islets were used as negative control for FACS gating. β cell-derived endocrine cells lineage traced with YFP driven by *RIP-Cre* were purified similarly by FACS sorting to a purity of 85%–95%. Sorted cells were then processed for RNA extraction, bisulfite sequencing, or ChIP studies. Human islet samples were obtained from healthy, adult, nondiabetic organ donors deceased due to acute traumatic or anoxic death and obtained from Integrated Islet Distribution Program (IIDP) as previously described (64). Equilibrated human islets were processed for qPCR and bisulfite sequencing analysis, similar to the mouse islets.

Immunofluorescence staining and morphometric analysis, β galactosidase staining, and antibodies. Standard immunofluorescence protocol was used for immunodetection of various proteins in pancreatic sections (64). Briefly, pancreatic tissue was dissected in PBS, fixed in 4% formaldehyde for 4 hours to overnight, dehydrated in grades of ethanol, and stored in –20°C until processed for paraffin embedding. Primary antibodies were diluted in the blocking solution at the following dilutions: mouse anti-glucagon (diluted 1:1,000, 0.2 ml, Sigma-Aldrich, catalog G2654); rabbit anti-glucagon (diluted 1:500, ImmunoStar Inc, catalog 20076); guinea pig anti-insulin (diluted 1:400, Dako, catalog A0564); mouse anti-DNMT3a (diluted 1:1,000, Novus Biologicals, catalog IMG-268A); chicken anti-GFP (1:500, Aves Labs Inc., catalog 1020); mouse anti-NKX6.1 (diluted 1:50, Developmental Studies Hybridoma Bank, catalog F55A10-S); rabbit anti-GLUT2 (diluted 1:1000, Millipore, catalog 07-1402), and mouse anti-Ki-67 (1:40; BD Biosciences, catalog 550609). Donkey- and goat-derived secondary antibodies conjugated to FITC or Cy3 were diluted 1:500 (Jackson ImmunoResearch Laboratories Inc.). Slides were viewed using a Leica DM6000 microscope, and images were acquired using Openlab software (Improvision). For analysis of the β cell mass and proliferation index, 3–6 mice were analyzed in each group. Proliferation index was calculated using Ki-67 staining as a marker for proliferation and insulin staining for β cells, defined as a percentage of Ki-67-positive β cells.

RNA isolation, RT-PCR, and real-time PCR. RNA was isolated from different cells and tissues (pancreatic islets, sorted β cells, human insulin-positive differentiated cells, human islets or MEFs) using RNeasyPlus Mini Kit (QIAGEN) and digested with RNase-free DNase (Fermentas) to eliminate DNA. RNA (0.5 mg) was used for preparation of single-stranded cDNA using Superscript III Reverse transcriptase (Invitrogen) by the oligo(dT) priming method. qPCR was performed using the 1× Fast SYBR Green Mix (Applied Biosystems) in an ABI7900HT system (Applied Biosystems). The expression levels of each transcript were normalized to the housekeeping gene cyclophilin. The primer sequences used are listed in Supplemental Tables 1 and 2. Each real-time PCR experiment shown is a representative from at least 3 independent experiments; for each experiment, islets were pooled from 3–4 mice per specified group. For a pilot, comprehensive analysis of mRNA expression to study the changes in different groups of metabolic genes, we also used a custom designed real-time PCR array (CAPM12177) of selected genes (QIAGEN), according to the manufacturer's instructions, using the standard DDcT method with cyclophilin A (*PpiA*) as a housekeeping gene, and the data were presented as fold changes on a logarithmic scale. The gene list for this array is detailed in Supplemental Table 3.

Metabolic and physiological analyses. Glucose tolerance test (GTT) and plasma insulin measurements were performed following overnight fasting of the mice, according to established protocols (64). To assess GSIS, we used islet perfusion and static incubation protocols. Islet perfusion experiments were performed (ACUSYST-S, Cellex Biosciences Inc.) as previously described (65). Batches of 20 islets were first exposed to 40 minutes of 4 mM glucose in Krebs Ringer bicarbonate buffer supplemented with 0.2% serum albumin, preheated to 37°C, and oxygenized with 95% O₂ and 5% CO₂, followed by 40 minutes of hyperglycemic perfusate (16 mM glucose). Effluent was collected in 4-minute intervals and assayed for insulin by ELISA (Mouse Insulin ELISA, Mercodia) for subsequent determi-

nation of basal and glucose-stimulated insulin secretion. For static-incubation GSIS assays, batches of 15 islets were first incubated in 2.8 mM glucose, followed by transfer to 16.7 mM glucose buffer in Krebs Ringer bicarbonate buffer, supplemented with 0.2% serum albumin at 37°C for 30 minutes each, and supernatant was collected after each incubation. Insulin was then extracted from islets by overnight incubation with acid ethanol. Insulin in supernatants and islet extracts was measured by ELISA (Mouse Insulin ELISA, Merco-dia). To measure lactate production, isolated islets were incubated at 37°C, 5% CO₂ in RPMI 1640 with 11.1 mM glucose overnight, followed by incubation in Krebs buffer with either 2.8 mM or 16.7 mM glucose for 1 hour (100 islets in 200 μ l), and the supernatant was collected, snap frozen on dry ice, and analyzed with a fluorometric L-Lactate assay kit (Abcam, catalog ab65330) according to the manufacturer's instructions. DNA was extracted from these islets by sonication, and DNA content was quantified by using Qubit fluorometric quantification (Invitrogen).

DNA methylation analyses and ChIP analyses. Bisulfite conversion of DNA from sorted β cells was performed as described previously (66). DNA samples were incubated with sodium bisulfite for 4–5 hours. Bisulfite-treated DNA was then desalted and precipitated. To generate PCR products, 1/10 of the precipitated DNA was used for each PCR using primers described in supplemental tables 4 and 5. Primers were designed using the MethPrimer software (Urogene). PCR products were gel purified and used for TOPO-TA cloning (Invitrogen), followed by sequencing. Bisulfite sequencing data were quantified and represented as percentage of methylated residues in each clone analyzed. Averages were derived from independent triplicates of each, and 10 clones were analyzed per group. ChIP assays on the purified β cells were carried out according to the micro-ChIP protocol (67), using minor modifications. Sorted cells were treated with 1% paraformaldehyde at room temperature for 20 minutes to cross-link the DNA with bound proteins. Formaldehyde was quenched by adding glycine to a final concentration of 125 mM, followed by cell

lysis in 100 μ l lysis buffer consisting of 50 mM Tris HCl pH 8.0, 10 mM EDTA, and 1% SDS, supplemented with 1 \times complete proteinase inhibitors (EMD Biosciences) and sonicated to yield DNA fragments with an average size of 500 bp using Bioruptor (Diagenode). A total of 2.5 μ g of antibody was bound to 20 μ l Protein-A/G Dynabeads (Invitrogen), depending on the antibody isotype, for 2 hours at 4°C with agitation. The following antibodies were used: Dnmt3a (Imgenex, catalog IMG-268A) and control mouse IgG (Diagenode, catalog kch-819-015). The primers used to amplify the different loci are listed in Supplemental Table 6.

Statistics. All data were expressed as mean \pm SEM. Mean and SEM values were calculated from at least triplicates of a representative experiment. The statistical significance of differences was measured by 2-tailed Student's *t* test. A *P* value < 0.05 indicated statistical significance. **P* < 0.05, ***P* < 0.01, ****P* < 0.005.

Study approval. All animal experiments were performed in accordance with NIH policies on the use of laboratory animals and approved by the Animal Research Committee of the Office for the Protection of Research Subjects at UCLA.

Acknowledgments

We are grateful to Peter Butler (UCLA) for discussions and input on these studies, and to Emily Snyder and James Maksymetz (UCLA) for technical support. This work was supported by an Advanced Postdoctoral Fellowship from the Juvenile Diabetes Research Foundation and a start-up grant from Larry L. Hillblom Foundation to S. Dhawan, as well as grants from National Institute of Diabetes and Digestive and Kidney Diseases (DK068763 and DK080996), Juvenile Diabetes Research Foundation, and the Helmsley Trust to M. Hebrok and A. Bhushan.

Address correspondence to: Anil Bhushan, PO Box 0534, 513 Parnassus Avenue, Diabetes Center, UCSF, San Francisco, California 94143, USA. Phone: 415.502.3295; E-mail: anil.bhushan@ucsf.edu.

- Ashcroft SJ. Glucoreceptor mechanisms and the control of insulin release and biosynthesis. *Diabetologia*. 1980;18(1):5–15.
- German MS. Glucose sensing in pancreatic islet β cells: the key role of glucokinase and the glycolytic intermediates. *Proc Natl Acad Sci U S A*. 1993;90(5):1781–1785.
- Hedeskov CJ. Mechanism of glucose-induced insulin secretion. *Physiol Rev*. 1980;60(2):442–509.
- Malaisse WJ, Sener A, Herchuelz A, Hutton JC. Insulin release: the fuel hypothesis. *Metabolism*. 1979;28(4):373–386.
- Malmgren S, et al. Tight coupling between glucose and mitochondrial metabolism in clonal β -cells is required for robust insulin secretion. *J Biol Chem*. 2009;284(47):32395–32404.
- Matschinsky F, et al. Glucokinase as pancreatic β cell glucose sensor and diabetes gene. *J Clin Invest*. 1993;92(5):2092–2098.
- Meglason MD, Matschinsky FM. Pancreatic islet glucose metabolism and regulation of insulin secretion. *Diabetes Metab Rev*. 1986;2(3):163–214.
- Schuit FC, Huypens P, Heimberg H, Pipeleers DG. Glucose sensing in pancreatic β -cells: a model for the study of other glucose-regulated cells in gut, pancreas, and hypothalamus. *Diabetes*. 2001;50(1):1–11.
- Blum B, Hrvatin SS, Schuetz C, Bonal C, Rezania A, Melton DA. Functional β -cell maturation is marked by an increased glucose threshold and by expression of urocortin 3. *Nat Biotechnol*. 2012;30(3):261–264.
- Jermendy A, et al. Rat neonatal β cells lack the specialised metabolic phenotype of mature β cells. *Diabetologia*. 2011;54(3):594–604.
- Artner I, et al. MafB is required for islet β cell maturation. *Proc Natl Acad Sci U S A*. 2007;104(10):3853–3858.
- Nishimura W, et al. A switch from MafB to MafA expression accompanies differentiation to pancreatic β -cells. *Dev Biol*. 2006;293(2):526–539.
- Aye T, Toschi E, Sharma A, Sgroi D, Bonner-Weir S. Identification of markers for newly formed β -cells in the perinatal period: a time of recognized β -cell immaturity. *J Histochem Cytochem*. 2010;58(4):369–376.
- Gu C, et al. Pancreatic β cells require NeuroD to achieve and maintain functional maturity. *Cell Metab*. 2010;11(4):298–310.
- Aguayo-Mazzucato C, et al. Thyroid hormone promotes postnatal rat pancreatic beta-cell development and glucose-responsive insulin secretion through MAFA. *Diabetes*. 2013;62(5):1569–1580.
- Blum B, et al. Reversal of β cell de-differentiation by a small molecule inhibitor of the TGF β pathway. *Elife*. 2014;3:e02809.
- Quintens R, Hendrickx N, Lemaire K, Schuit F. Why expression of some genes is disallowed in β -cells. *Biochem Soc Trans*. 2008;36(pt 3):300–305.
- Pullen TJ, Khan AM, Barton G, Butcher SA, Sun G, Rutter GA. Identification of genes selectively disallowed in the pancreatic islet. *Islets*. 2010;2(2):89–95.
- Thorrez L, et al. Tissue-specific disallowance of housekeeping genes: the other face of cell differentiation. *Genome Res*. 2011;21(1):95–105.
- Pullen TJ, Rutter GA. When less is more: the forbidden fruits of gene repression in the adult beta-cell. *Diabetes Obes Metab*. 2013;15(6):503–512.
- Schuit F, et al. β -Cell-specific gene repression: a mechanism to protect against inappropriate or maladjusted insulin secretion? *Diabetes*. 2012;61(5):969–975.
- Otonkoski T, et al. Physical exercise-induced hypoglycemia caused by failed silencing of

- monocarboxylate transporter 1 in pancreatic β cells. *Am J Hum Genet.* 2007;81(3):467–474.
23. van Arensbergen J, et al. Ring1b bookmarks genes in pancreatic embryonic progenitors for repression in adult β cells. *Genes Dev.* 2013;27(1):52–63.
 24. van Arensbergen J, et al. Derepression of Polycomb targets during pancreatic organogenesis allows insulin-producing β -cells to adopt a neural gene activity program. *Genome Res.* 2010;20(6):722–732.
 25. Georgia S, Bhushan A. β Cell replication is the primary mechanism for maintaining postnatal β cell mass. *J Clin Invest.* 2004;114(7):963–968.
 26. Lemons JM, et al. Quiescent fibroblasts exhibit high metabolic activity. *PLoS Biol.* 2010;8(10):e1000514.
 27. Alcazar O, Tiedge M, Lenzen S. Importance of lactate dehydrogenase for the regulation of glycolytic flux and insulin secretion in insulin-producing cells. *Biochem J.* 2000;352(pt 2):373–380.
 28. Becker TC, BeltrandRio H, Noel RJ, Johnson JH, Newgard CB. Overexpression of hexokinase I in isolated islets of Langerhans via recombinant adenovirus. Enhancement of glucose metabolism and insulin secretion at basal but not stimulatory glucose levels. *J Biol Chem.* 1994;269(33):21234–21238.
 29. Henquin JC, et al. Congenital hyperinsulinism caused by hexokinase I expression or glucokinase-activating mutation in a subset of β -cells. *Diabetes.* 2013;62(5):1689–1696.
 30. Ishihara H, et al. Overexpression of hexokinase I but not GLUT1 glucose transporter alters concentration dependence of glucose-stimulated insulin secretion in pancreatic β -cell line MIN6. *J Biol Chem.* 1994;269(4):3081–3087.
 31. Zhao C, Rutter GA. Overexpression of lactate dehydrogenase A attenuates glucose-induced insulin secretion in stable MIN-6 β -cell lines. *FEBS Lett.* 1998;430(3):213–216.
 32. Artner I, et al. MafA and MafB regulate genes critical to β -cells in a unique temporal manner. *Diabetes.* 2010;59(10):2530–2539.
 33. Matsuoka TA, et al. MafA regulates expression of genes important to islet β -cell function. *Mol Endocrinol.* 2007;21(11):2764–2774.
 34. Talchai C, Xuan S, Lin HV, Sussel L, Accili D. Pancreatic β cell dedifferentiation as a mechanism of diabetic β cell failure. *Cell.* 2012;150(6):1223–1234.
 35. Guillam MT, et al. Early diabetes and abnormal postnatal pancreatic islet development in mice lacking Glut-2. *Nat Genet.* 1997;17(3):327–330.
 36. Magnuson MA, Osipovich AB. Pancreas-specific Cre driver lines and considerations for their prudent use. *Cell Metab.* 2013;18(1):9–20.
 37. Guo T, Landsman L, Li N, Hebrok M. Factors expressed by murine embryonic pancreatic mesenchyme enhance generation of insulin-producing cells from hESCs. *Diabetes.* 2013;62(5):1581–1592.
 38. Ravassard P, et al. A genetically engineered human pancreatic β cell line exhibiting glucose-inducible insulin secretion. *J Clin Invest.* 2011;121(9):3589–3597.
 39. Boschero AC, Bordin S, Sener A, Malaisse WJ. D-glucose and L-leucine metabolism in neonatal and adult cultured rat pancreatic islets. *Mol Cell Endocrinol.* 1990;73(1):63–71.
 40. Rozzo A, Meneghel-Rozzo T, Delakorda SL, Yang SB, Rupnik M. Exocytosis of insulin: in vivo maturation of mouse endocrine pancreas. *Ann NY Acad Sci.* 2009;1152:53–62.
 41. Tu J, Tuch BE. Glucose regulates the maximal velocities of glucokinase and glucose utilization in the immature fetal rat pancreatic islet. *Diabetes.* 1996;45(8):1068–1075.
 42. Agathocleous M, et al. Metabolic differentiation in the embryonic retina. *Nat Cell Biol.* 2012;14(8):859–864.
 43. Alaynick WA, et al. ERRgamma directs and maintains the transition to oxidative metabolism in the postnatal heart. *Cell Metab.* 2007;6(1):13–24.
 44. Stringari C, Edwards RA, Pate KT, Waterman ML, Donovan PJ, Gratton E. Metabolic trajectory of cellular differentiation in small intestine by Phasor Fluorescence Lifetime Microscopy of NADH. *Sci Rep.* 2012;2:568.
 45. Zhang J, Nuebel E, Daley GQ, Koehler CM, Teitell MA. Metabolic regulation in pluripotent stem cells during reprogramming and self-renewal. *Cell Stem Cell.* 2012;11(5):589–595.
 46. Pullen TJ, Sylow L, Sun G, Halestrap AP, Richter EA, Rutter GA. Overexpression of monocarboxylate transporter-1 (SLC16A1) in mouse pancreatic β -cells leads to relative hyperinsulinism during exercise. *Diabetes.* 2012;61(7):1719–1725.
 47. Pagliuca FW, et al. Generation of functional human pancreatic β cells in vitro. *Cell.* 2014;159(2):428–439.
 48. Rezanian A, et al. Reversal of diabetes with insulin-producing cells derived in vitro from human pluripotent stem cells. *Nat Biotechnol.* 2014;32(11):1121–1133.
 49. Dhawan S, Georgia S, Tschen SI, Fan G, Bhushan A. Pancreatic β cell identity is maintained by DNA methylation-mediated repression of Arx. *Dev Cell.* 2011;20(4):419–429.
 50. Georgia S, Kanji M, Bhushan A. DNMT1 represses p53 to maintain progenitor cell survival during pancreatic organogenesis. *Genes Dev.* 2013;27(4):372–377.
 51. Papizan JB, et al. Nkx2.2 repressor complex regulates islet β -cell specification and prevents β -to- α -cell reprogramming. *Genes Dev.* 2011;25(21):2291–2305.
 52. Rose NR, Klose RJ. Understanding the relationship between DNA methylation and histone lysine methylation. *Biochim Biophys Acta.* 2014;1839(12):1362–1372.
 53. Puri S, Hebrok M. Diabetic β cells: to be or not to be? *Cell.* 2012;150(6):1103–1104.
 54. Dayeh T, et al. Genome-wide DNA methylation analysis of human pancreatic islets from type 2 diabetic and non-diabetic donors identifies candidate genes that influence insulin secretion. *PLoS Genet.* 2014;10(3):e1004160.
 55. Yang BT, et al. Insulin promoter DNA methylation correlates negatively with insulin gene expression and positively with HbA(1c) levels in human pancreatic islets. *Diabetologia.* 2011;54(2):360–367.
 56. Yang BT, et al. Increased DNA methylation and decreased expression of PDX-1 in pancreatic islets from patients with type 2 diabetes. *Mol Endocrinol.* 2012;26(7):1203–1212.
 57. Prentki M, Nolan CJ. Islet β cell failure in type 2 diabetes. *J Clin Invest.* 2006;116(7):1802–1812.
 58. Guo S, et al. Inactivation of specific β cell transcription factors in type 2 diabetes. *J Clin Invest.* 2013;123(8):3305–3316.
 59. Herrera PL. Adult insulin- and glucagon-producing cells differentiate from two independent cell lineages. *Development.* 2000;127(11):2317–2322.
 60. Jackson-Grusby L, et al. Loss of genomic methylation causes p53-dependent apoptosis and epigenetic deregulation. *Nat Genet.* 2001;27(1):31–39.
 61. Soriano P. Generalized lacZ expression with the ROSA26 Cre reporter strain. *Nat Genet.* 1999;21(1):70–71.
 62. Muzumdar MD, Tasic B, Miyamichi K, Li L, Luo L. A global double-fluorescent Cre reporter mouse. *Genesis.* 2007;45(9):593–605.
 63. Zhou JX, et al. Combined modulation of polycomb and trithorax genes rejuvenates β cell replication. *J Clin Invest.* 2013;123(11):4849–4858.
 64. Zhong L, Georgia S, Tschen SI, Nakayama K, Bhushan A. Essential role of Skp2-mediated p27 degradation in growth and adaptive expansion of pancreatic β cells. *J Clin Invest.* 2007;117(10):2869–2876.
 65. Song SH, et al. Pulsatile insulin secretion by human pancreatic islets. *J Clin Endocrinol Metab.* 2002;87(1):213–21.
 66. Millar DS, Warnecke PM, Melki JR, Clark SJ. Methylation sequencing from limiting DNA: embryonic, fixed, and microdissected cells. *Methods.* 2002;27(2):108–113.
 67. Dahl JA, Collas P. MicroChIP — a rapid microchromatin immunoprecipitation assay for small cell samples and biopsies. *Nucleic Acids Res.* 2008;36(3):e15.